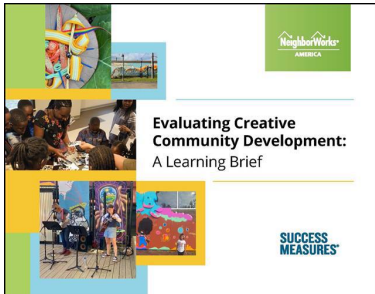


Updates from Success Measures

Evaluation Learning Partner for Community-Based Organizations and Funders

April 2023

Eight Organizations Evaluate Creative Community Development Activities



A cohort of community-based NeighborWorks network organizations spent nearly a year evaluating a range of arts and culture work, such as artists-in-residence programming, public art murals, nature trail art and community gardens. This pilot project supported each organization with grant funding from NeighborWorks America, a paired evaluator and access to the **Success Measures evaluation tools for creative community development**, including tools using weaving and mapmaking activities to assess community change. The just released **Evaluating Creative Community Development: A Learning Brief** highlights the experience of the participating organizations as well as their reflections captured in real time through interviews, poems and digital illustrations.

Project Highlights

Lincoln Institute of Land Policy - Success Measures recently completed an evaluation of the **Institute's** publications and communications products and strategies related to their core goal areas, including equitable land and tax policy and systems, climate resilience, reduced poverty and fiscal health. The evaluation team developed a learning framework and conducted in-depth work sessions and interviews with staff, board and stakeholders, resulting in a comprehensive report of findings and recommendations for the Institute's Publications, Communications and Learning Design unit moving forward.

Universal Health Care Foundation of Connecticut – Success Measures, in partnership with Kia Levey-Burden, designed and facilitated an evaluative learning process for the **foundation** and a cohort of community-based organizations in Connecticut who are working to advance health justice and equity through power building and community advocacy. The team brought together 18 organizations—including grassroots, policy advocates and organizers—for six interactive learning sessions to build relationships, learn about each other's efforts related to health justice, identify commonalities and develop a shared language. The process led to a theory of change for the foundation's internal use as they strategically consider opportunities to support health justice in Connecticut, as well as recommendations from the grantee cohort for the field and foundations about next steps and the support needed to move the work forward.

Success Measures is delighted to be working with these new clients:

- **Virginia Housing Development Authority** to help develop a measurement framework for its affordable community housing programs.
- **Greater Minnesota Housing Fund** on an outcome framework for the organization, followed by resident surveys to assess the impact of permanent supportive housing and housing affordability on residents' health outcomes.
- **Camber Property Group** on revising a resident needs assessment survey and supporting electronic implementation of the survey at a 4200-unit property in the Bronx.

News from the Success Measures team

Look for **Jessica Mulcahy** and **Lynne Wallace** at the upcoming **Grantmakers for Effective Organizations Learning Conference** in Washington, DC. Jessica will be a session panelist representing Success Measures, joining Verge Impact Partners and The Kresge Foundation, in a discussion about the pre-conditions necessary to engage in equity-rooted evaluative work and other insights from their recent collaborative developmental evaluation of Kresge's Advancing Health Through Equity funding opportunity.

Maggie Grieve, **Nancy Kopf** and **Carol Rogers** participated in NeighborWorks America's Shared Equity Work Group, contributing to the resulting white paper: "**Advancing the Promise of Shared Equity Housing Models**" which includes highlights of Success Measures' evaluation of the Shared Equity Housing Initiative.

Helen Moore recently received her 35-hour Project Management Professional (PMP) certificate from **Project Management Academy** and PMP certification from **Project Management Institute**. She is currently participating in **Emergent Learning Community Project's** 6-month intensive on the principles and practices of Emergent Learning.

Jessica Mulcahy looks forward to bringing new insights to our philanthropic evaluation work from her recent studies in "Culture, Equity and Evaluation" and "Policy Analysis, Implementation and Evaluation" offered through **The Evaluators' Institute**.

We're back in the office on a hybrid schedule! We'd be happy to have a visit if you're ever near our new DC offices in the Union Market neighborhood: 1255 Union St. NE, Suite 500, Washington D.C. 20002.

Want to know more about our work?

**We'd welcome the chance to share our insights and experience with you.
We look forward to hearing from you.**

successmeasures@nw.org • successmeasures.org




Success Measures, a social enterprise at NeighborWorks America since 2004, provides evaluation, learning and strategy consulting, technical assistance, tools and technology to organizations and funders looking to understand how their programs and investments are changing lives and improving communities. To all of our work, we bring a commitment to intentional, equitable assessments that help residents, nonprofits, and foundations understand and strengthen their impact through collaborative evaluation and learning processes that are inclusive, practical, and purposeful.



[View this email in your browser](#)

You are receiving this email because of your relationship with NeighborWorks America. Please [reconfirm](#) your interest in receiving emails from us. If you do not wish to receive any more emails, you can [unsubscribe here](#).

This message was sent to mcorthell@beaconcommunitiesllc.com by successmeasures@nw.org
1255 Union St. NE, Suite 500, Washington, DC, 20002

 **Verified Unsubscribe** SM | [Unsubscribe](#) | [Manage Subscription](#) | [Report Abuse](#)